



WK750

Men's softshell trousers

- 3-layer softshell for ideal protection.
- Breathable and waterproof wind-breaker technical membrane.
- Optimum comfort thanks to its elasticated material and lots of clever finishes.

95% polyester / 5% elastane. Three-layer bonded fabric breathable 3,000 g/m²/24 h and waterproof 8,000 mm. Outer: 95% polyester/5% elastane. Breathable membrane mid layer. Microfleece inner. Straight fit. 2 zipped pockets with piping and front zip puller. 2 gusseted side cargo pockets with contrasting piping and flap with velcro fastening. 2 back pockets with flap and velcro fastening. Preformed knee panels for added comfort. Adjustable waistband with tear-release fastening and loops. Waistband raised at back with inner non-slip elasticated band for optimal support. Attached plastic ring on one of the loops on the front right when worn. Zip and button supported by a herringbone strap to facilitate and strengthen fastening. Elasticated hems with gusseted zipped slit on the sides. Reinforced crotch gusset for increased comfort and perfect freedom of movement. Contrasting reinforced stitching. Triple over stitching on side seams, inside leg, front + back crotch seams and crotch gusset. Detachable brand label.



XS - S - M - L - XL - XXL - 3XL - 4XL



300 g/m²



More information

Logistic



1



10



BD - Bangladesh

Customs code



62034311

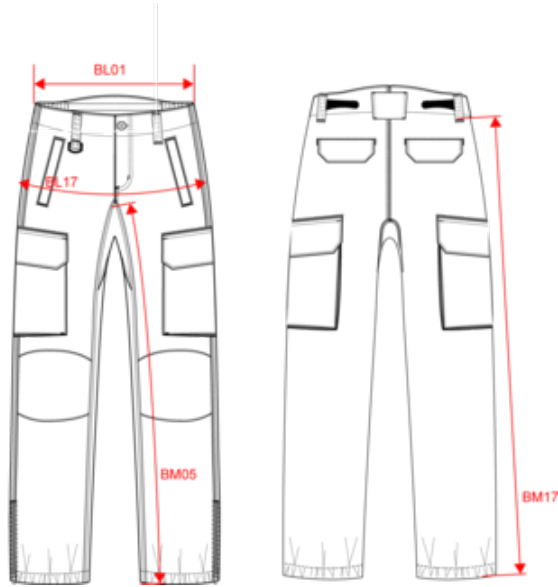
Washing instructions



WK750

Men's softshell trousers

Dimensions (cm)




Measurements in cm	XS	S	M	L	XL	XXL	3XL	4XL
BL01 - 1/2 waist width (buttoned up and front band over back band)	37.50	40.50	43.50	46.50	49.50	52.50	55.50	58.50
BL17 - 1/2 hip width (measured parallel to waistband)	47.00	50.00	53.00	56.00	59.00	62.00	65.00	68.00
BM05 - Inseam length	82.00	82.00	82.00	82.00	82.00	82.00	82.00	82.00
BM17 - Side length (waistband excluded)	100.25	101.00	101.75	102.50	103.25	104.00	104.75	105.50



WK750

Men's softshell trousers

Colours information

Logistic  1  10

Sizes	Width (cm)	Height (cm)	Length (cm)	Net weight (kg)	Gross weight (kg)	Pieces/Box	Pieces/Bundle
-------	------------	-------------	-------------	-----------------	-------------------	------------	---------------